



**Mrcartool<sup>®</sup>**

**SMOKE LEAK  
DETECTOR**

**T105**



ALARM



SMOKE

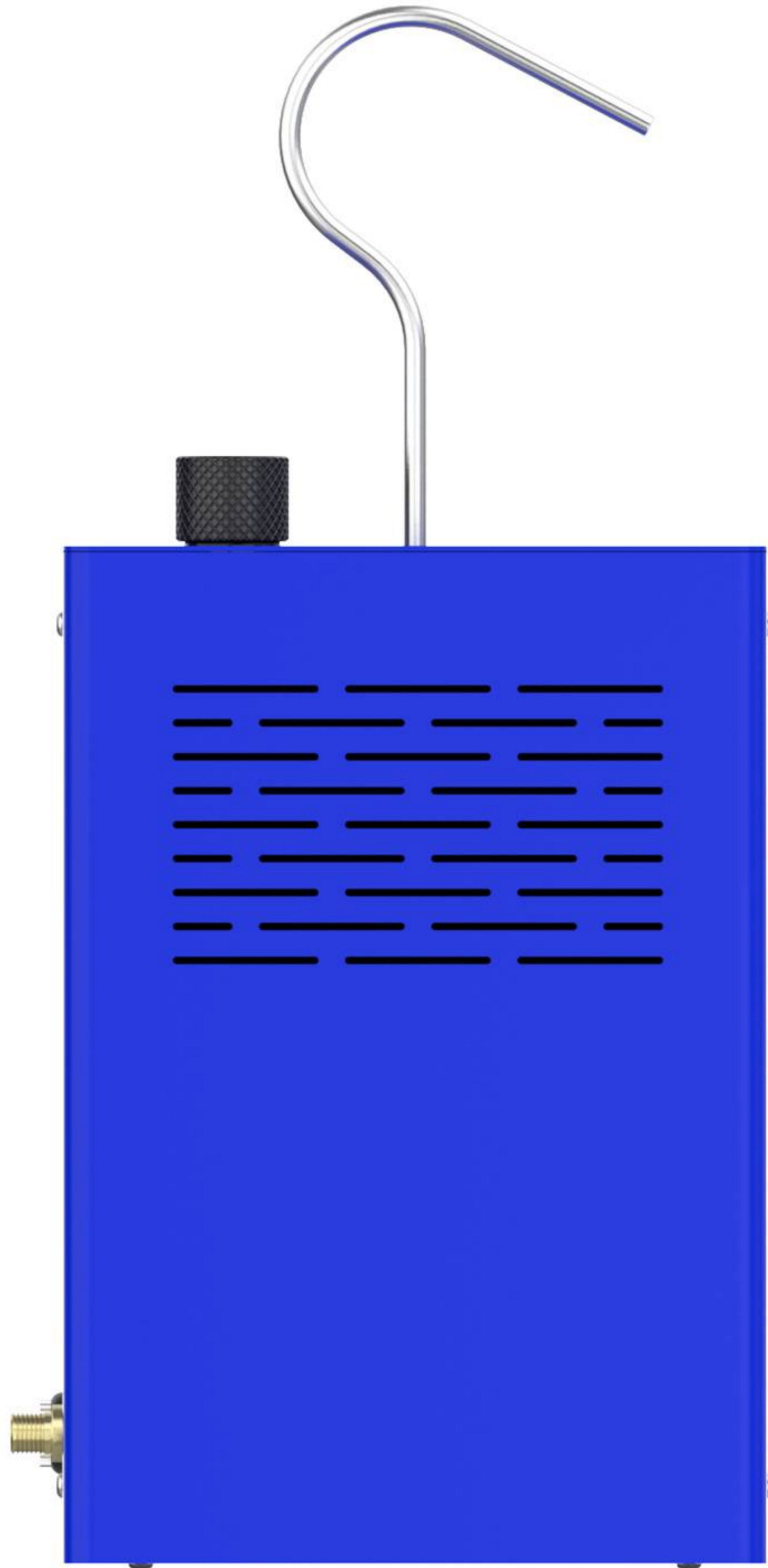


POWER



SMOKE SWITCH









**Mrcartool**<sup>®</sup>



Intake  
System Test



Exhaust  
System Test



Car  
Sealing Test



Various Pipe  
Fittings Test



Fuel Tank  
System Test



Pressure  
Display



Smoke flow  
can be adjusted

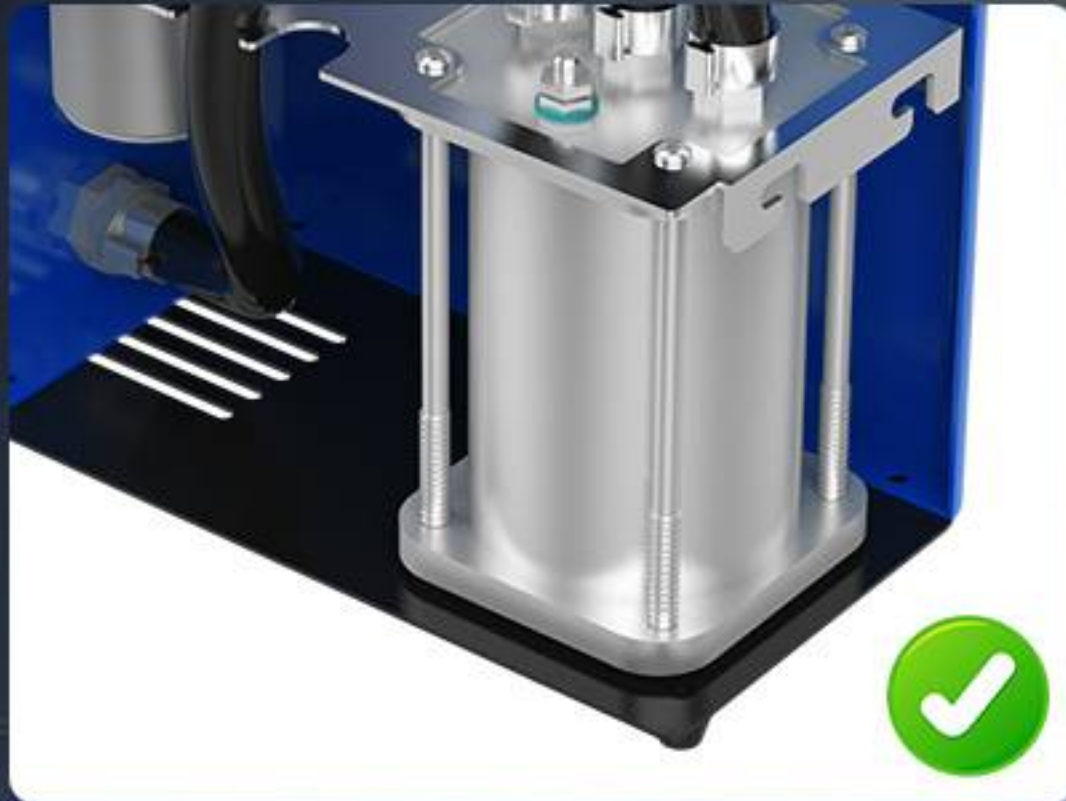
# T105

## SMOKE LEAK DETECTOR



# BUILT-IN AIR PUMP

No need to connect other gas supply equipment,  
convenient to complete the test work at any location.



Built-in air pump

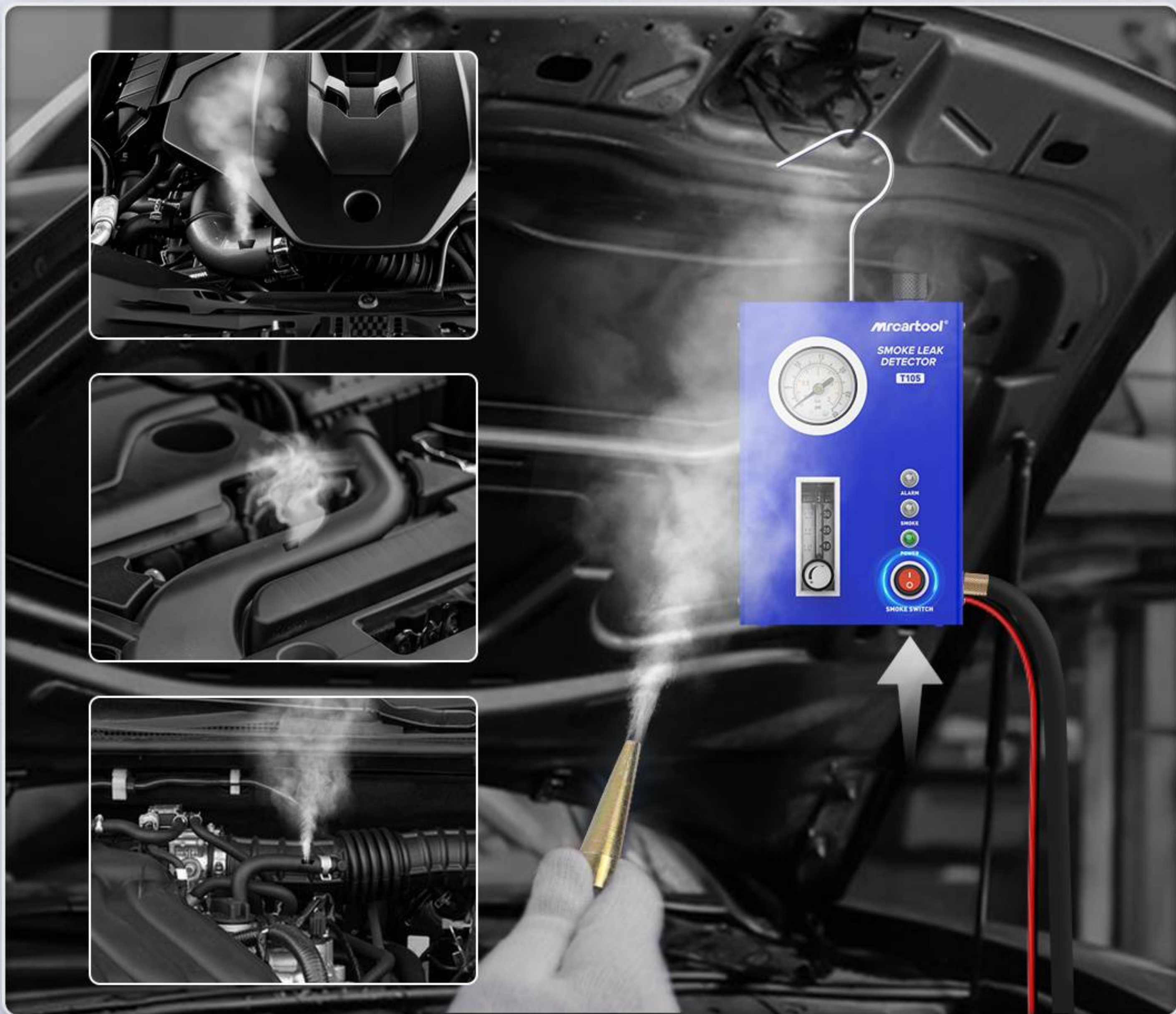


No external air  
supply required



# QUICK AND MASSIVE SMOKE OUTPUT

A large amount of smoke is generated quickly when the switch is pressed, making it quicker to locate leaks.





# OVERHEAT / LOW TEMP. PROTECTION



## Overheat Protection

When the temperature of the device exceeds 75°C, power protection will be intelligently activated to turn it off

## Low temp. Protection

The device can also work normally at -20°C

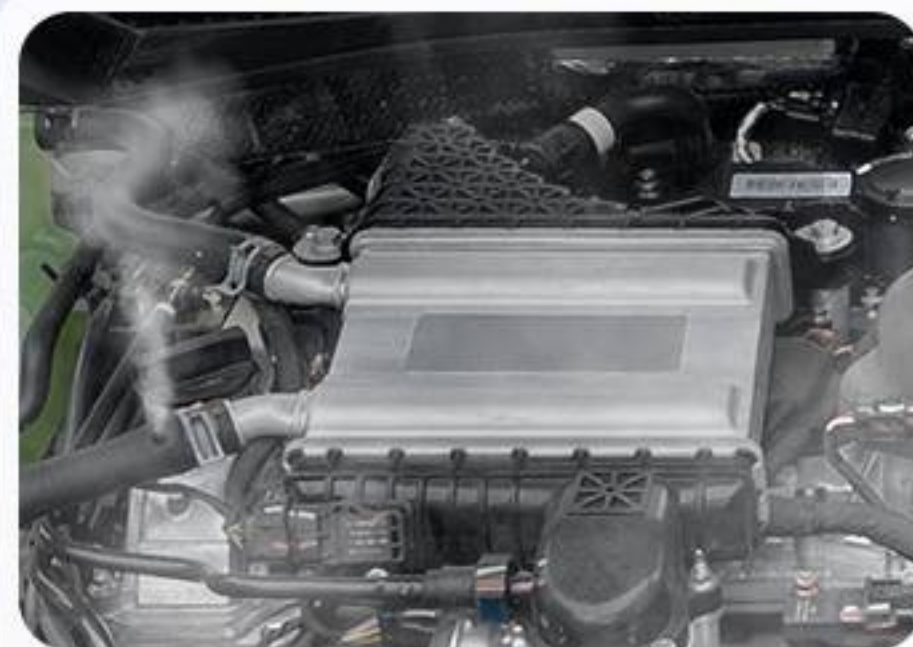
# DETECT EVERY TYPE OF LEAK



Crankcase



Oil seal



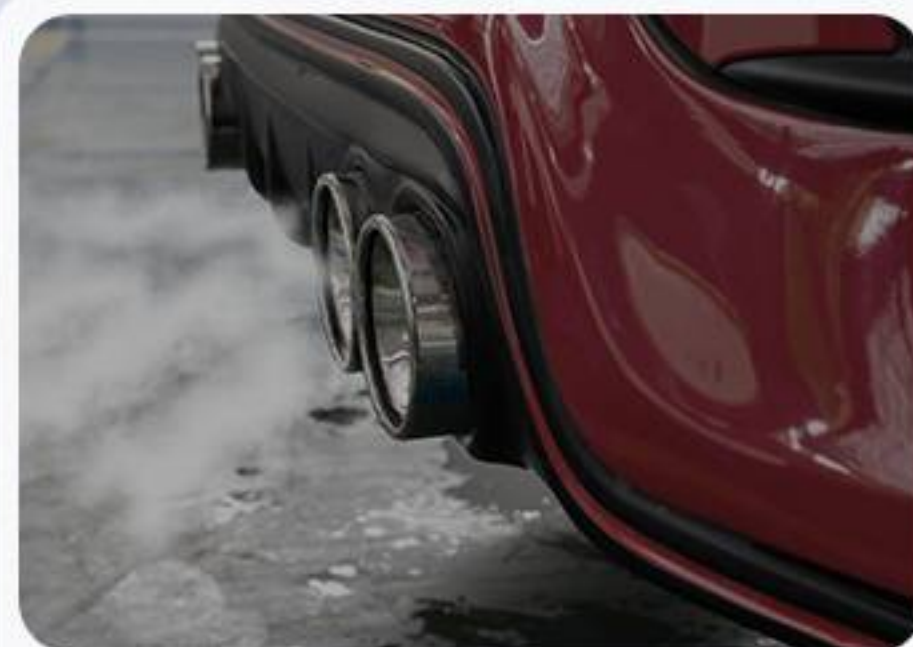
Intercooler air



Throttle valve



Intake manifold



Exhaust pipe



Fuel tank



Various pipe fittings



Coolant tank

# SUITABLE FOR ALL MODELS

Suitable for leakage detection in piping systems of all models of cars, motorcycles, trucks, snowmobiles, off-road vehicles, speedboats, etc.



# LIGHTWEIGHT AND PORTABLE

Compact and exquisite shape, it takes up no storage space, the whole machine weighs only 1.2kg, easy to carry.



# QUICKLY DETERMINE LEAKAGE

Equipped with a pressure gauge, you can quickly determine the degree of leakage of the pipeline by observing the pressure change.



No Leak



Small Leak

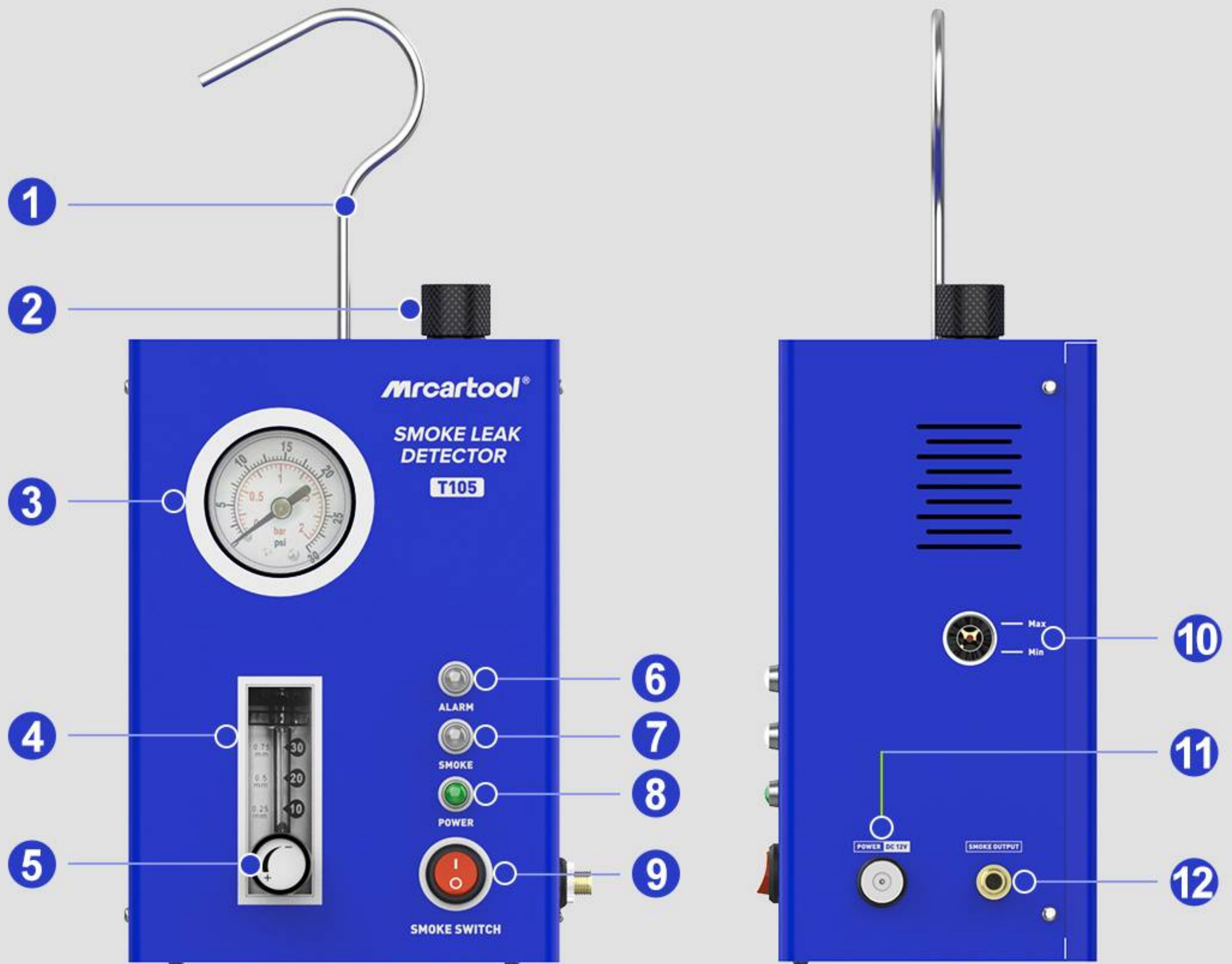


Severe Leak

# SMOKE FLOW CAN BE ADJUSTED

Equipped with smoke flow meter to observe the current smoke flow  
Control the smoke output by adjusting the flow regulator.





- |                           |                                   |                               |
|---------------------------|-----------------------------------|-------------------------------|
| <b>1</b> Hook port        | <b>2</b> Oil filling port         | <b>3</b> Pressure gauge       |
| <b>4</b> Smoke flow meter | <b>5</b> Smoke flow control valve | <b>6</b> Protection indicator |
| <b>7</b> Smoke indicator  | <b>8</b> Power indicator          | <b>9</b> Smoke mode switch    |
| <b>10</b> Oil level gauge | <b>11</b> Power socket            | <b>12</b> Smoke outlet        |

**WORKING THEORY**

Low oxygen combustion

**POWER SUPPLY**

DC 12V battery

**AIR PRESSURE OUTPUT**

Built-in air pump

**RATED OUTPUT PRESSURE**

<15psi

**RATED OUTPUT FLOW**

<6L/min

**RATED POWER**

65W

**PRODUCT WEIGHT**

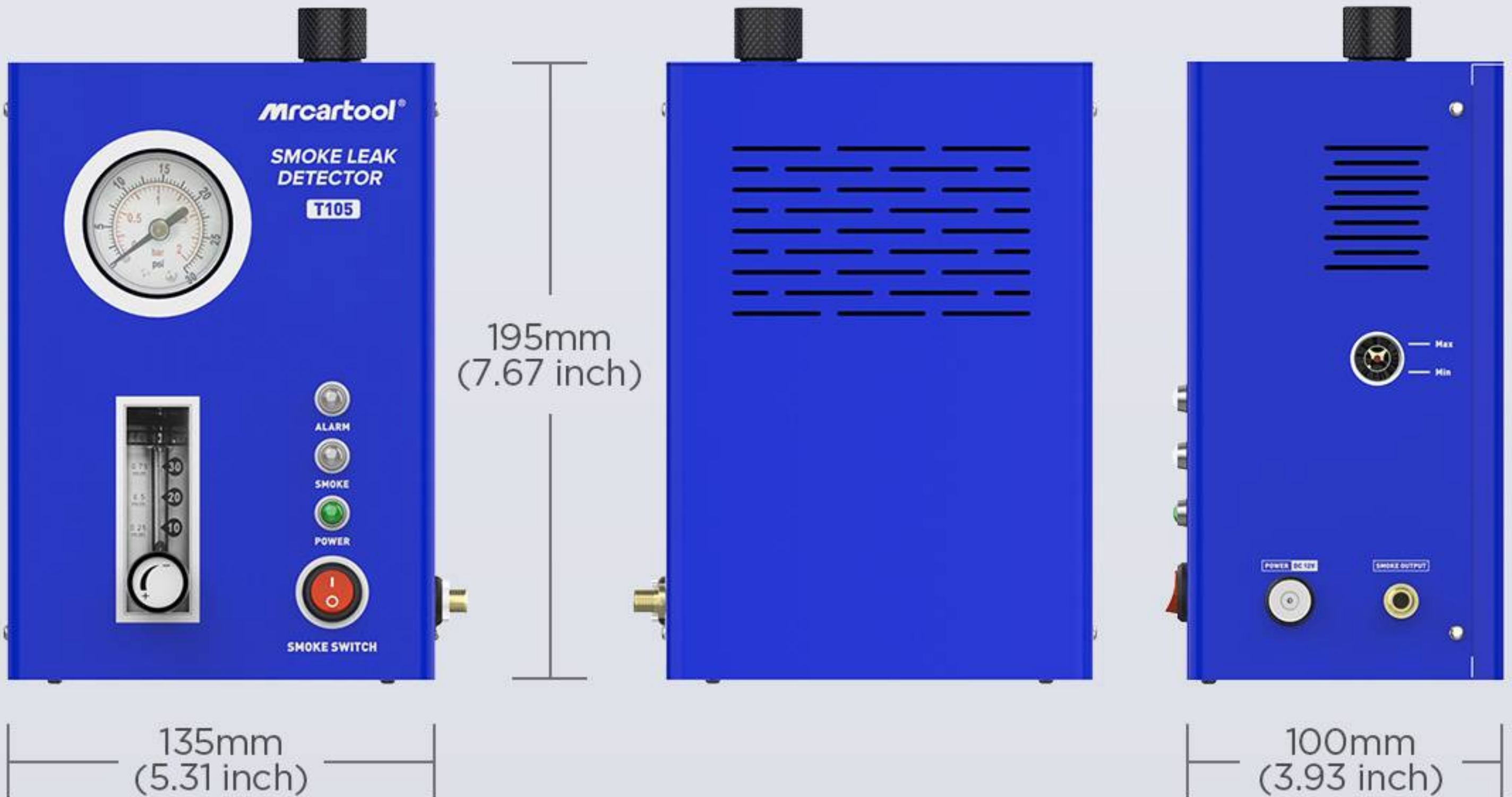
1.20kg

**GROSS WEIGHT**

2.20kg

**TEST OIL FILLING VOLUME**

10-20ml







Main Unit



Package



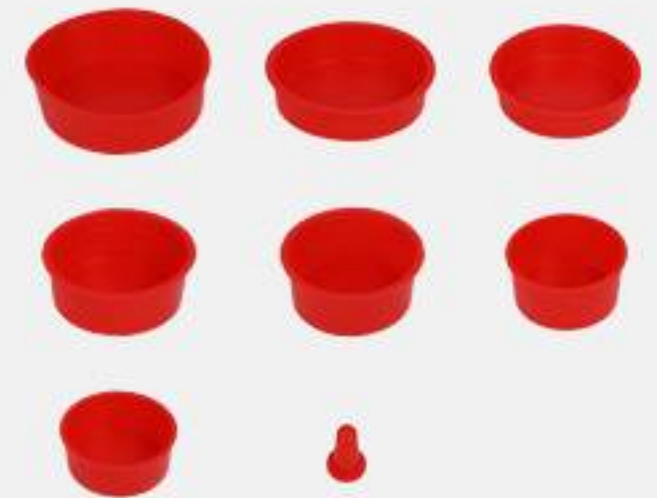
User Manual



EVAP Special Connector & Valve Core Wrench



Power Cord Clamp



Soft Rubber Hose Plug



Test Oil Refill Bottle & Hook



Smoke Tube



Cone Adapter



Airbag Adapter